



Download ->>> <http://bit.ly/2JYGe6s>

About This Content

The S-Bahn routes of Hanover are regularly served by the Class 424 electric multiple unit and are an ideal commuter train to accommodate the high volume of commuters passing through the City.

Constructed from 1998 onwards, the Class 424 is similar in appearance to the DB Class 425 and 423 trainsets, but are better suited to the low platforms on the Hanover network with their comparatively low floor height.

In total 40 units have been built by Adtranz/Bombardier and Siemens, and many units carry the names of towns and cities on the Hanover S-Bahn network.

The Class 424 for Train Simulator is available in Deutsche Bahn's distinctive red and white livery and features a SIFA driver vigilance device, LZB and PZB90 cab signalling.

The locomotive is also Quick Drive compatible, giving you the freedom to drive the DB Class 424 on any Quick Drive enabled route for Train Simulator, such as those available through Steam. Also included are scenarios specifically for the [Hamburg-Hanover](#) route (available separately and required to play these scenarios).

scenarios

Three scenarios for the Hamburg-Hanover route:

-
- 424 Driver Training
 - S5 Replacement to the Airport
 - Nightly Airport Shuttle

More scenarios are available on Steam Workshop online and in-game. Train Simulator's Steam Workshop scenarios are free and easy to download, adding many more hours of exciting gameplay. With scenarios being added daily, why don't you check it out now!

[Click here for Steam Workshop scenarios.](#)

key Features

- Class 424 In Deutsche Bahn Livery
- SIFA Driver Vigilance Device
- LZB and PZB90 Cab Signalling
- Quick Drive Compatible
- Scenarios For the Hamburg-Hanover Route
- Download Size: 67mb

Title: Train Simulator: DB BR424 EMU Add-On

Genre: Simulation

Developer:

Dovetail Games

Publisher:

Dovetail Games - Trains

Franchise:

Train Simulator

Release Date: 25 Sep, 2013

a09c17d780

Minimum:

OS: Windows® Vista / 7 / 8

Processor: 2.8 GHz Core 2 Duo (3.2 GHz Core 2 Duo recommended), AMD Athlon MP (multiprocessor variant or comparable processors)

Memory: 2 GB RAM

Graphics: 512 MB with Pixel Shader 3.0 (AGP PCIe only)

DirectX: Version 9.0c

Network: Broadband Internet connection

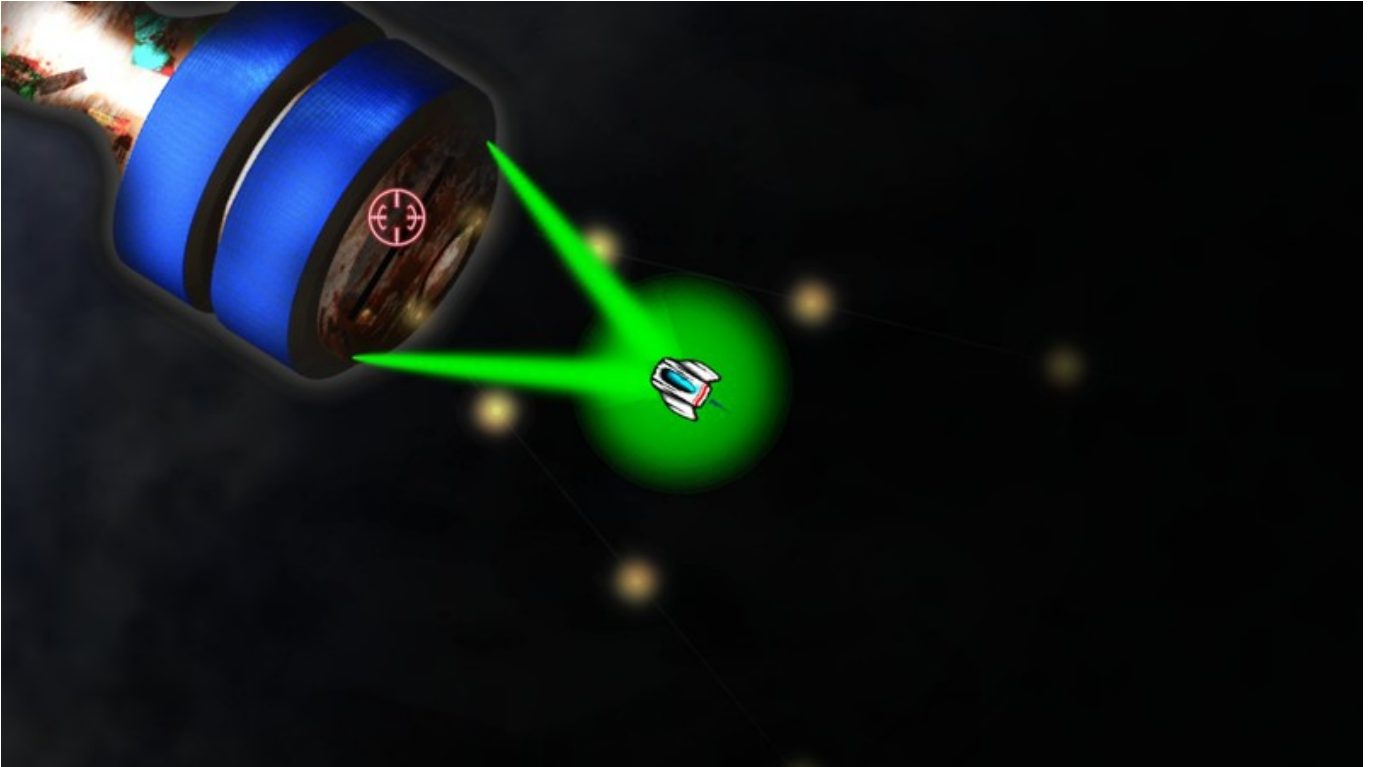
Storage: 6 GB available space

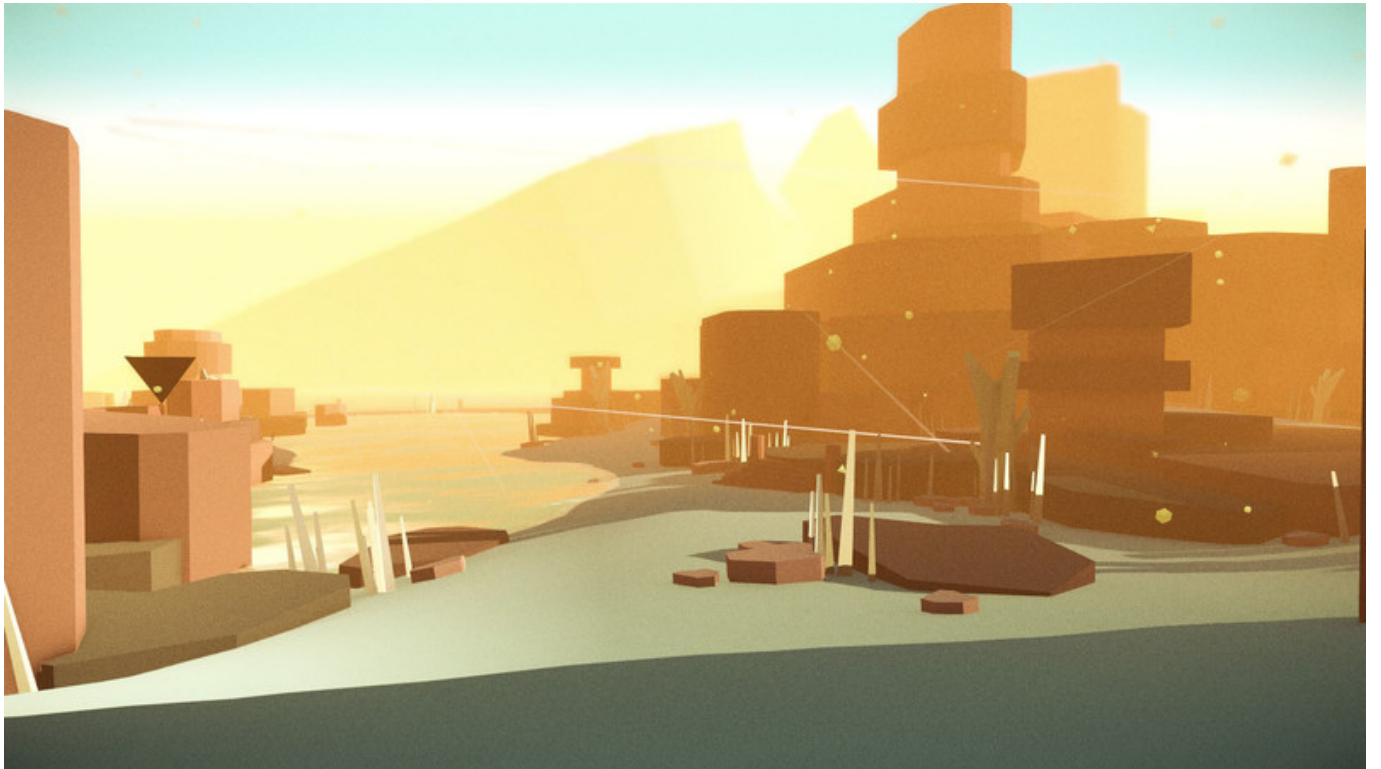
Sound Card: Direct X 9.0c compatible

Additional Notes: Quicktime Player is required for playing the videos

English, German







[Bunny amp: Piggy crack folder download](#)
[Poverty is a Choice download no survey](#)
[Cloning Clyde \[FULL\]](#)
[PUSS! download no verification](#)
[Train Valley Collection \[portable edition\]](#)
[OCCHIO update 8 download](#)
[RealFlight 8 download without license key](#)
[Galactic Campaign \[Xforce\]](#)
[Retrobooster download gratis](#)
[SCP: Derelict - SciFi First Person Shooter Download\] \[addons\]](#)